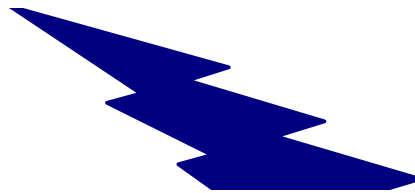


PC LINK



Manual

version 2.36



INDEX

PC Specification -----	3
Auto Start Installation -----	3
Manual Installation -----	3
Introduction -----	4
Connecting the Textphone to Your Computer -----	5
Keep on Top Feature-----	6
Incoming Call -----	6
Making a Call -----	7
Setting the Function Keys -----	8
Quick Menu -----	9
Quick Memo -----	9
Quick Dial -----	10
Setting Font/Colour -----	10
Printing -----	11
Saving Conversations -----	11
PC Link - Menu Structure -----	12

PC Specification:

In order for PC Link to function correctly, your PC must meet the following minimum system requirements:

- Operating system: Windows 95/98/Me/2000/XP
- Serial port
- CD Rom Drive
- Mouse

Auto Start Installation:

1. Insert the PC Link CD into your CD Rom Drive.
2. Follow the on-screen prompts.
3. Remove the CD.

If the PC Link software installation does not auto start after you have inserted the CD into your CD Rom Drive, please follow the manual installation instructions below.

Manual Installation:

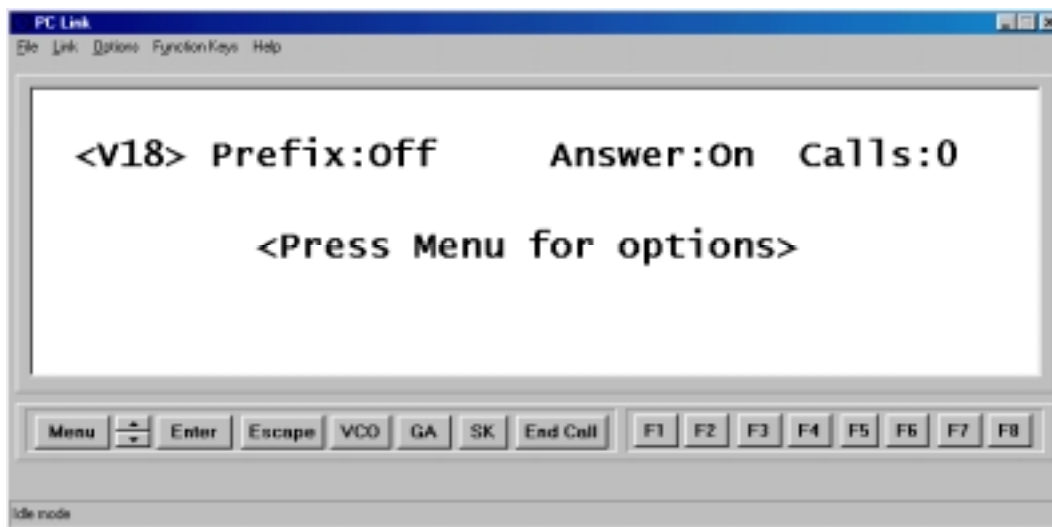
1. Insert the PC Link CD into your CD Rom Drive.
2. Click "Start"
3. Click "Run"
4. Click "Browse"
5. Select your CD Rom Drive
5. Click "Set up"
6. Click "Open"
8. Click "OK"
9. Follow the on-screen prompts.
10. Remove the CD.

Introduction

The PC Link Software has been specially designed for Sensory Communications TextLink and BT Textphone users to allow a PC to operate as a textphone by remotely controlling only these products.

Most TextLink users are already familiar with the dedicated features that these models have to offer, although we would advise reference to the User Guide of your particular model for detailed descriptions of how to use the various functions.

The PC Link Software also gives the advantage of providing a larger screen and larger keyboard of your choice as well as displaying conversations in different fonts and colours.



The main PC Link display

Typing with the computer keyboard is the same as typing on the TextLink keypad. Menu, arrows, Enter, Escape, VCO, GA, SK, End Call and the function keys (F1-F8) have been implemented on the main screen of the PC Link to enable you to comfortably use the computer keyboard supported by the on-screen buttons to select various functions.

The Voice Carry Over (VCO) function is not implemented within PC Link and should be operated on your textphone in the normal way.

Function keys can be assigned to frequently used operations such as dialling a user programmed telephone/textphone number, or transmitting a phrase or greeting. Please be aware that it is possible to program any PC Link function key to implement a different function to the corresponding key on the TextLink

Upon termination of a call you are prompted to optionally save the conversation for later retrieval. Conversations can also be printed.

Please remember that the Auto Shutdown feature on your textphone should not be used while using PC Link.

Connecting the Textphone to Your Computer

The textphone is connected to the PC via the serial cable provided. The cable plugs into the 'expansion port' on the back of the textphone and into a free serial (COM) port on your PC.

Starting procedure:

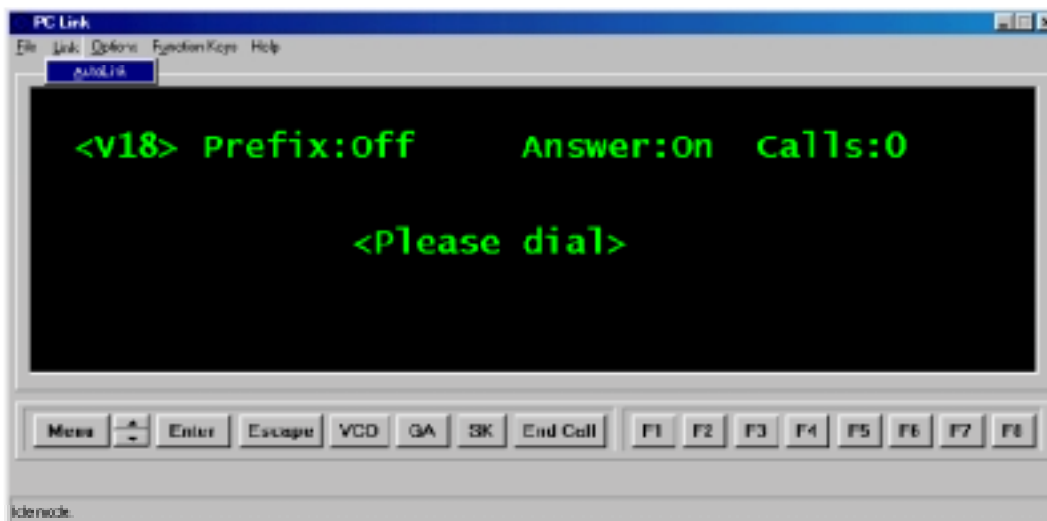
1. Connect the cable
2. Turn on the TextLink textphone
3. Start the software by double clicking the PC LINK icon or selecting Start.

The software automatically scans the COM ports to find the textphone.

Once the textphone is found the message: "**<PC Mode On>**" is displayed on your PC screen.

If the PC Link software is restarted, or if your PC is shut down then PC Link will fail to detect your TextLink textphone unless the textphone is restarted by switching it off and then on again.

Once the textphone has been restarted then PC Link can be initialised by selecting Auto Link from the Link menu option as shown below.



Selecting AutoLink

If a message appears on your PC screen: "**ERROR DETECTING TEXTPHONE**"

you must turn the textphone off, restart it and then select Auto Link from the Link menu as shown above.

Keep on Top

PC Link has the Windows Keep on Top feature implemented that prevents any other Windows from appearing above the PC Link display screen. To turn the feature on select Options in the main menu and click on Keep on Top within the drop down selection. Clicking Options again you will see a tick at the left hand end of the Keep on Top menu.

Incoming call

When receiving an incoming call, the background of the PC Link display changes colour to red and flashes constantly until answered.

The message **<Incoming call>** is displayed

A ringing sound can also be heard if you have a sound card installed in your PC.

Immediately when the call has ended, a pop-up window appears prompting you to save the conversation:

The following message is displayed:

“Would you like to save this conversation?”

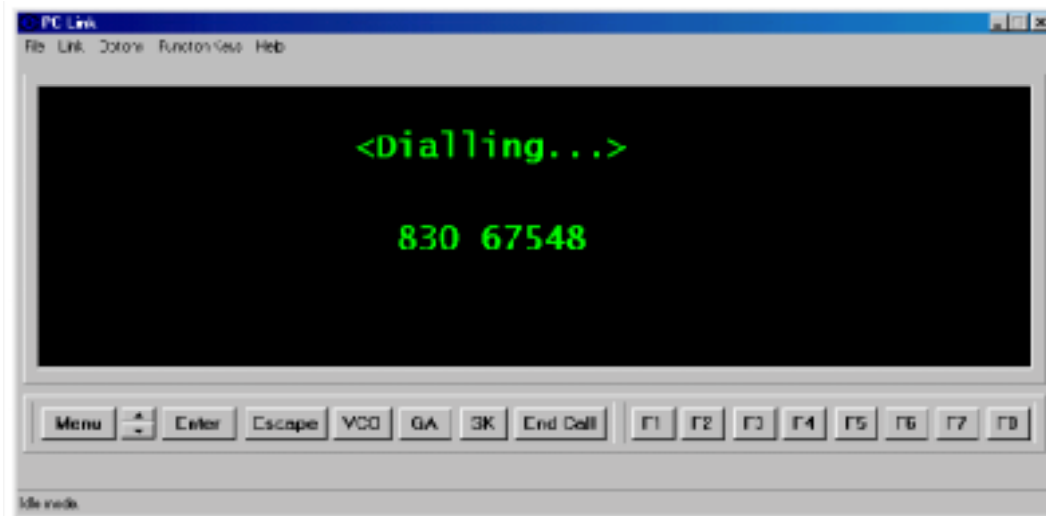
Yes No

Making a Call

To make a call, type in the telephone number you want to dial and press 'Enter'.

The Textphone then makes the call.

Once you are connected to the called number, use the computer keyboard to converse.



Making a call

GA can be accessed on the screen using mouse click or via the keyboard shortcut key Ctrl

SK can be accessed on the screen using mouse click or via the keyboard shortcut key Insert

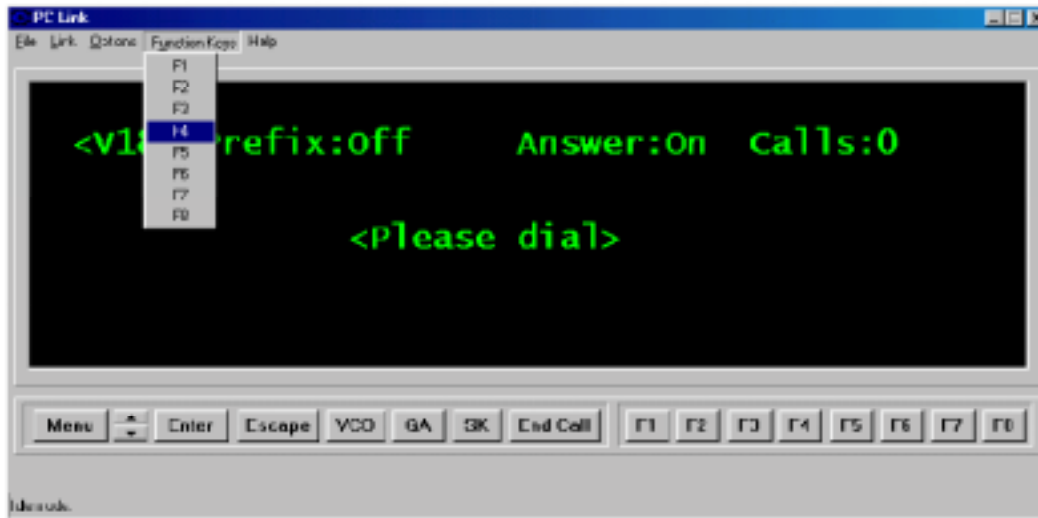
Calls are terminated by clicking End Call.

Setting the Function Keys

Each Function Key(1-8) can be reprogrammed to perform a different task.

Please be aware that it is possible to program any PC Link Function Key differently to the corresponding key on your TextLink.

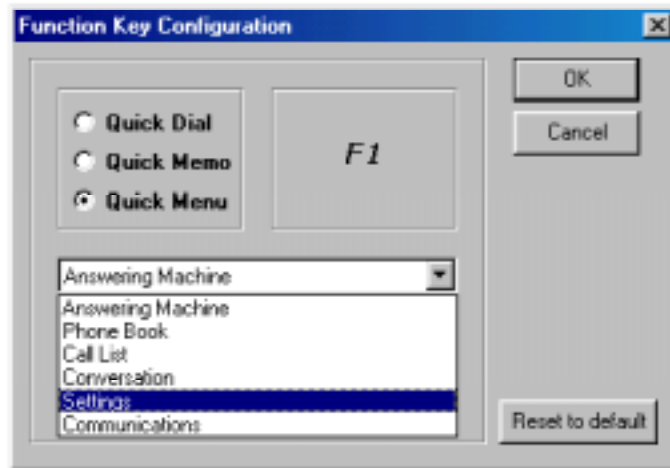
These tasks fall under following categories:
Quick dial, Quick memo, Quick menu.



The picture above shows F4 being selected for reconfiguration

Quick Menu

To configure a function key to automatically access a TextLink menu first select 'Quick Menu' in the function key configuration dialog as shown below.



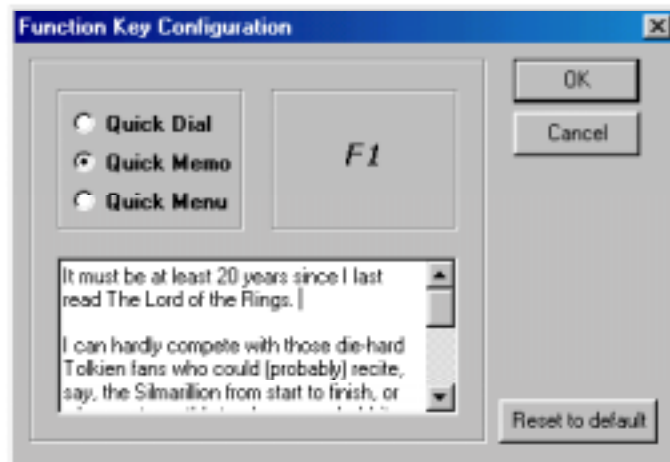
Then you will get a choice of settings: Answering Machine, Phone Book, Call List, Conversation, Settings, Communications.

Press OK to store the chosen function.

To remove a quick menu setting press 'Reset to default'.

Quick Memo

To configure a function key to transmit a phrase or a long piece of text, first select Memo in the function key configuration dialog as shown below.



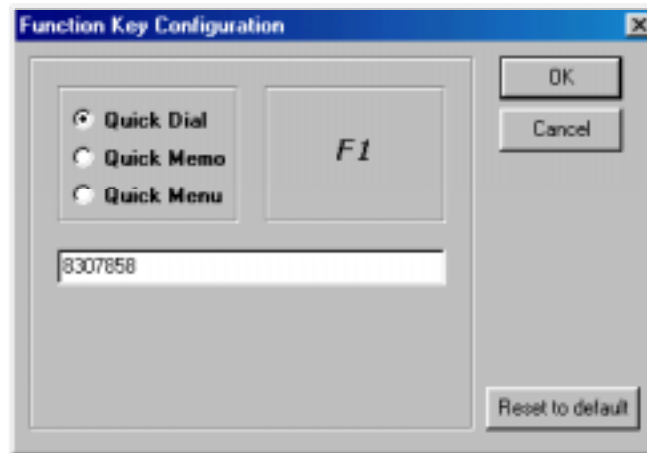
A personally designed memo can be typed in to the box provided.

Note: This function can only be carried out during a call

To remove a memo press 'Reset to default'. This will remove the memo and reassign the default factory setting for the function key.

Quick Dial

To configure a function key to automatically dial a number first select 'Quick Dial' in the function key configuration dialog box as shown below.



Next, type in the number you wish to dial.

Press OK to store the number and to close the dialog box.

Press cancel to exit the dialog without saving.

To remove a number, press 'Reset to default'.

This will remove the number and reassign the default factory setting for the function key.

Setting Font / Colour

On the PC Link display screen you have a choice of setting different: Font, Font Style, Font Size and the effects like: strikethrough, underline and colour.

You are shown a sample of the chosen font/colour on a small screen.

Press Options from the menu on the top left-hand side of the PC Link display screen and then press Font.

Press OK to confirm your choice.

To choose a different remote font or background colour, press Options from the menu on the top left-hand side of the PC Link display screen, then press Remote Font Colour or Background and you will be given a choice of 48 basic colours or decide on a custom colour of your personal choice.

Press OK to confirm your choice.

Printing

A conversation may be printed either from a saved file, or directly from the text screen prior to ending the call.

In a printed conversation, local and remote text is differentiated using the characters:

'<' for local, and '>' for remote text.

An example would be:

```
< Hello Peter, how are you?  
> Fine, are you coming round today?  
< Yes
```

The first and third lines are outgoing text, i.e. being sent to the other person by your TextLink, the second line is incoming text from the other person's textphone.

Saving Conversations

Once a call has finished you are prompted to save the conversation.

You will not be prompted if you have saved the conversation before ending the call.

By default the saved conversation will be stored in the folder called 'saved conversations' which is in the same directory as the application.

The Save as feature gives you the option of saving the conversation in other formats

The full default path to saved conversations is:

C:\Program Files\Sensory Communications\PC Link\saved conversations

Saved conversations can then be opened and read or edited by selecting 'Open' from the file menu.

Conversations saved as rtf. can also be opened with a word processor.

Please note that it is not possible to save your current conversation when you immediately receive another incoming call.

PC Link - Menu structure

File:

Open
Save
Save As...
Close

Print Set up
Print

Exit

Link:

Auto Link

Options:

Keep On Top

Font:

-Font

-Font style

-Font size

-Effects

-Colour

-Sample

-Script

Remote Font Colour (the choice of colours for the incoming call)

Background (the choice of colours)

Function Keys:

F1 - F8 keys

Help:

Help Topics: PC Link Help

1. Contents - options:

- Introduction
- Connecting the textphone
- Making a call
- Setting the function keys
- Quick Dial
- Quick Memo
- Quick Menu
- Saving Conversations
- Printing

2. Index - options

- a) Type the first few letters of the word you are looking for.
- b) Click the index entry you want and then click Display:
 - Calling
 - Connecting
 - Function keys
 - Introduction
 - Printing
 - Quick dial
 - Quick memo
 - Quick menu
 - Saving

3. Find - options

- a) Type the word(s) you want to find
- b) Select some matching words to narrow your search
- c) Click a topic, then click Display:
 - Connecting
 - Function keys
 - Introduction
 - Printing
 - Quick dial
 - Quick menu
 - Saving

About - this section provides information about the operating PC Link version



Sensory Communications
DSP House, 253A Kilburn Lane, London W10 4BQ
Tel: 020 8964 0774 Fax: 020 8964 0720
e-mail: info@sensorycomms.com www.sensorycomms.com